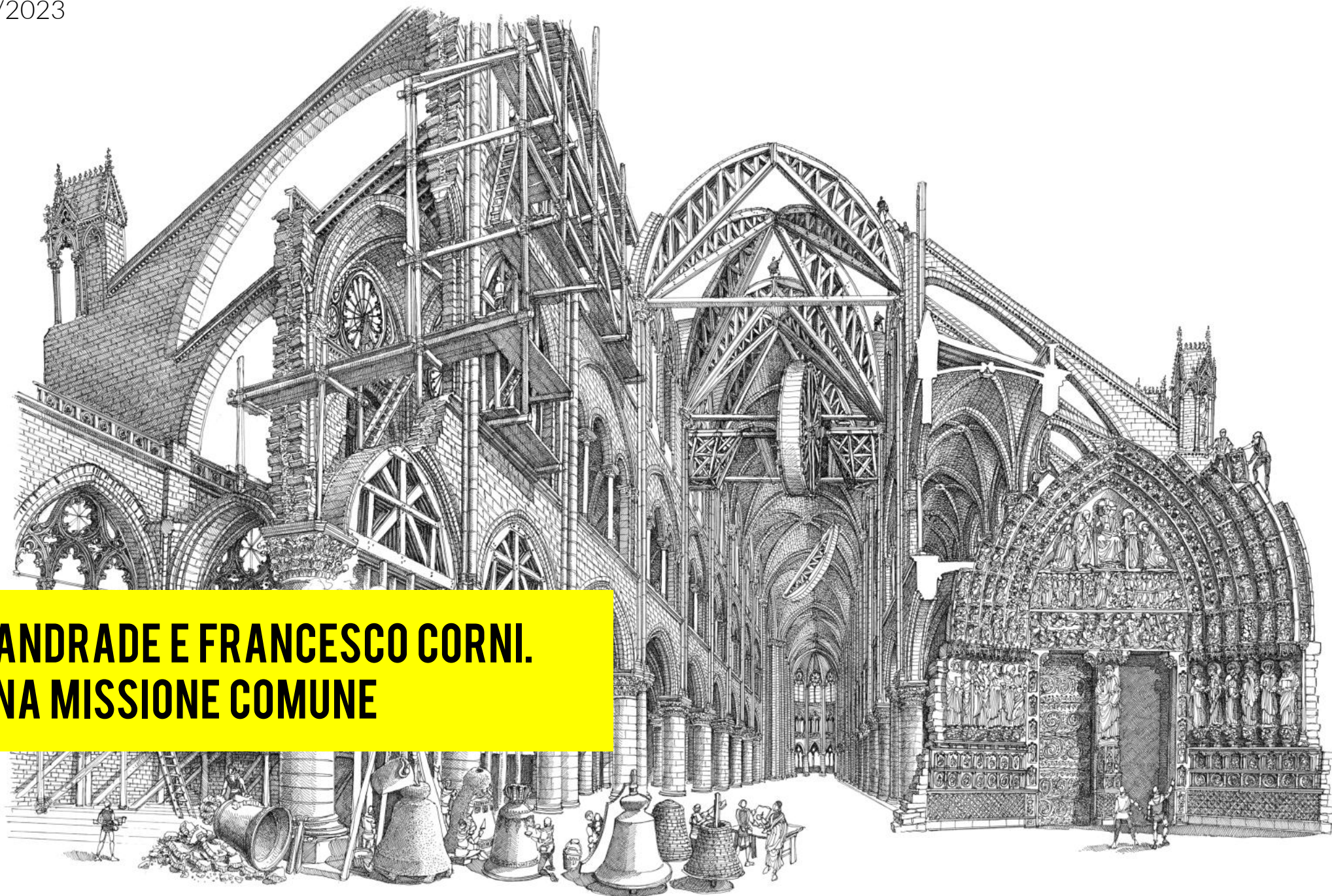


Torino, 7/11/2023



**ALFREDO D'ANDRADE E FRANCESCO CORNI.
STORIA DI UNA MISSIONE COMUNE**

A portrait of Francesco Corni, an elderly man with a full white beard and balding head. He is wearing a grey V-neck sweater over a light-colored striped shirt. He has his arms crossed and is holding a black pen in his right hand. The background is a plain, light-colored wall.

FRANCESCO CORNI



Francesco Corni

1. 1952- 1970

Torino - Il gioco, la tecnica

2. 1970 -1986

Aosta - il linguaggio, la 'scienza'

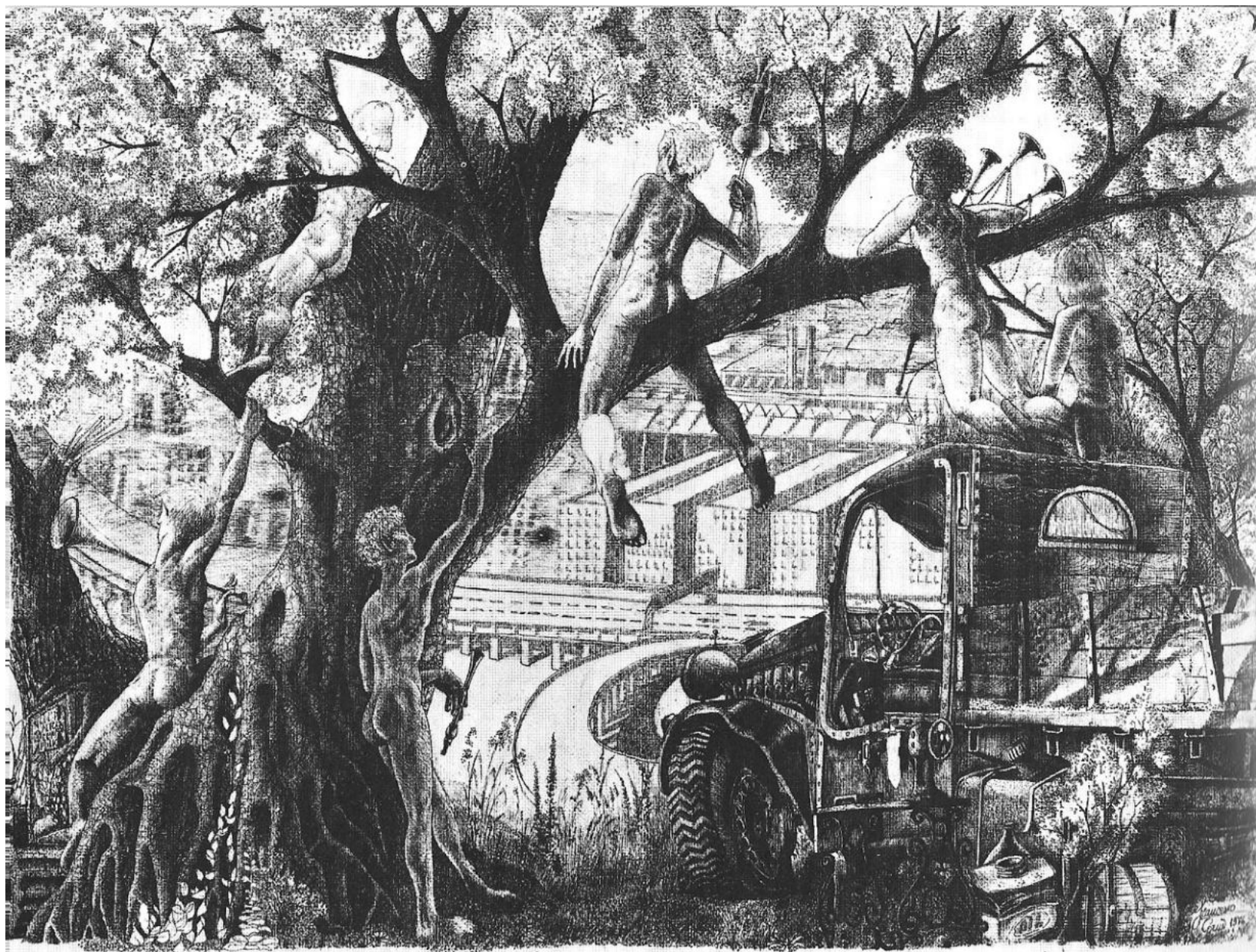
3. 1986-2020

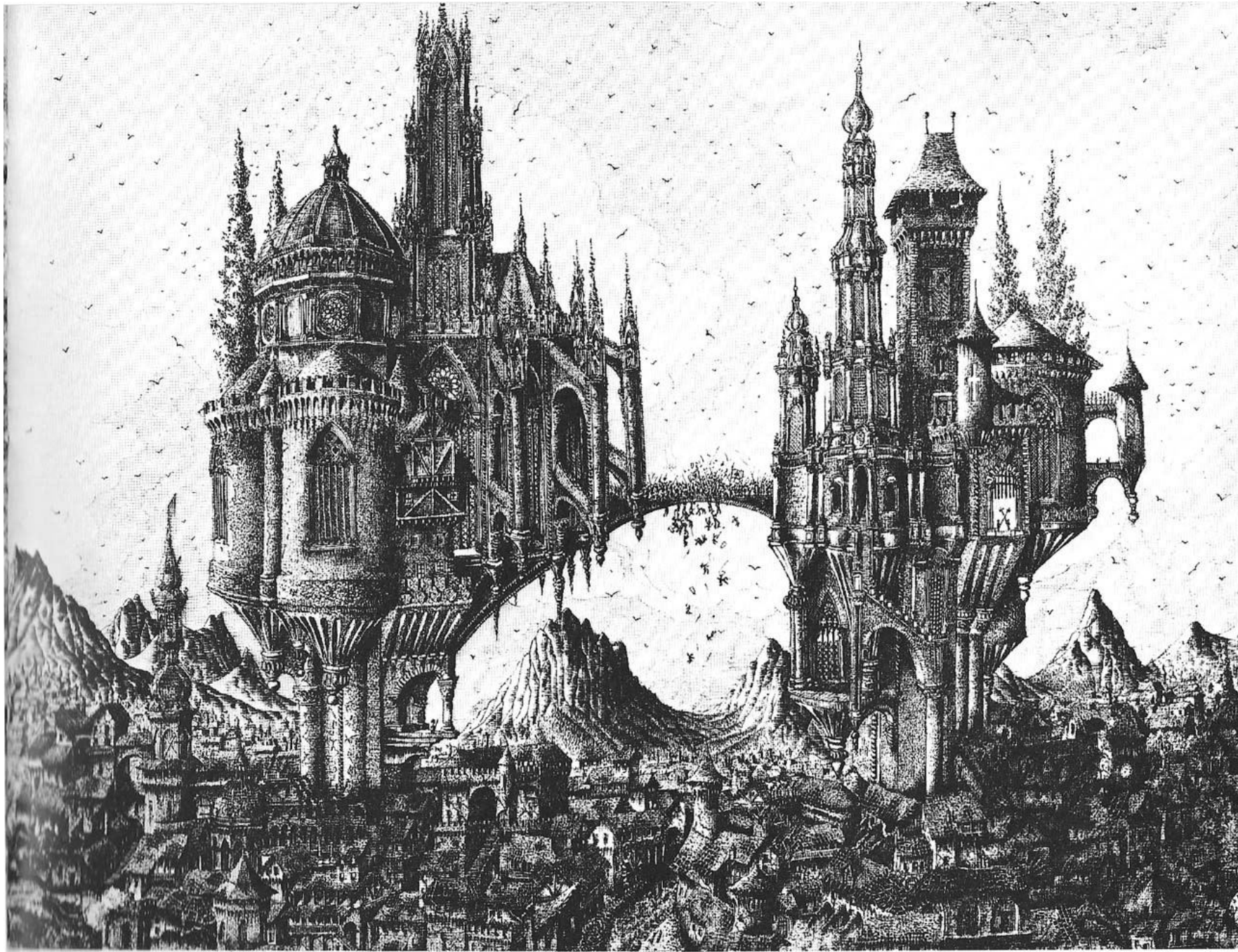
Strambino - la missione, il lavoro

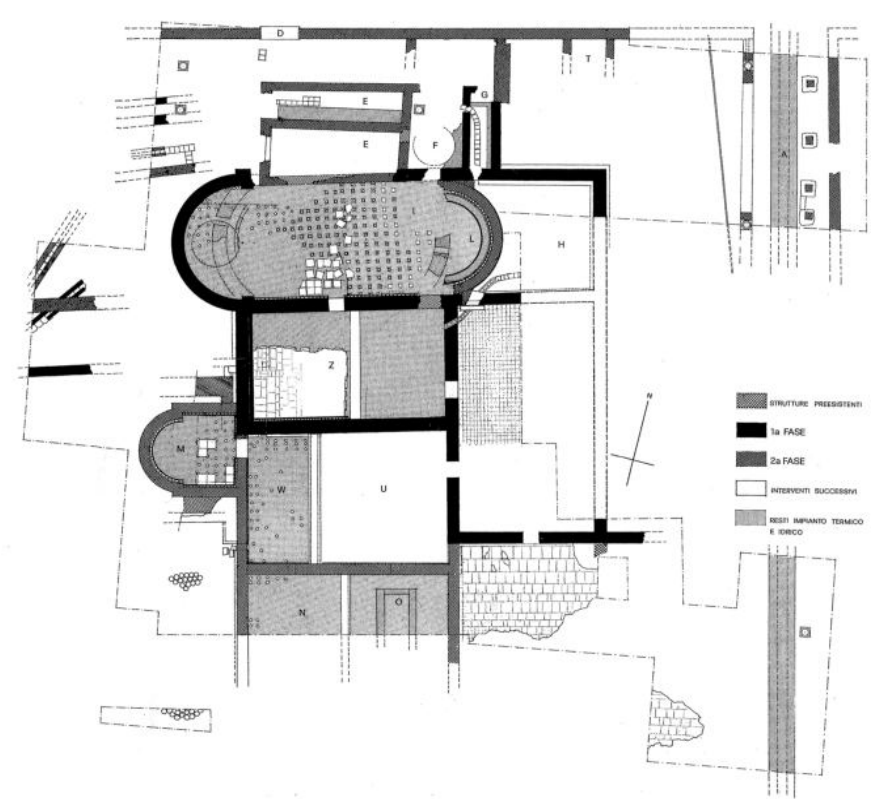
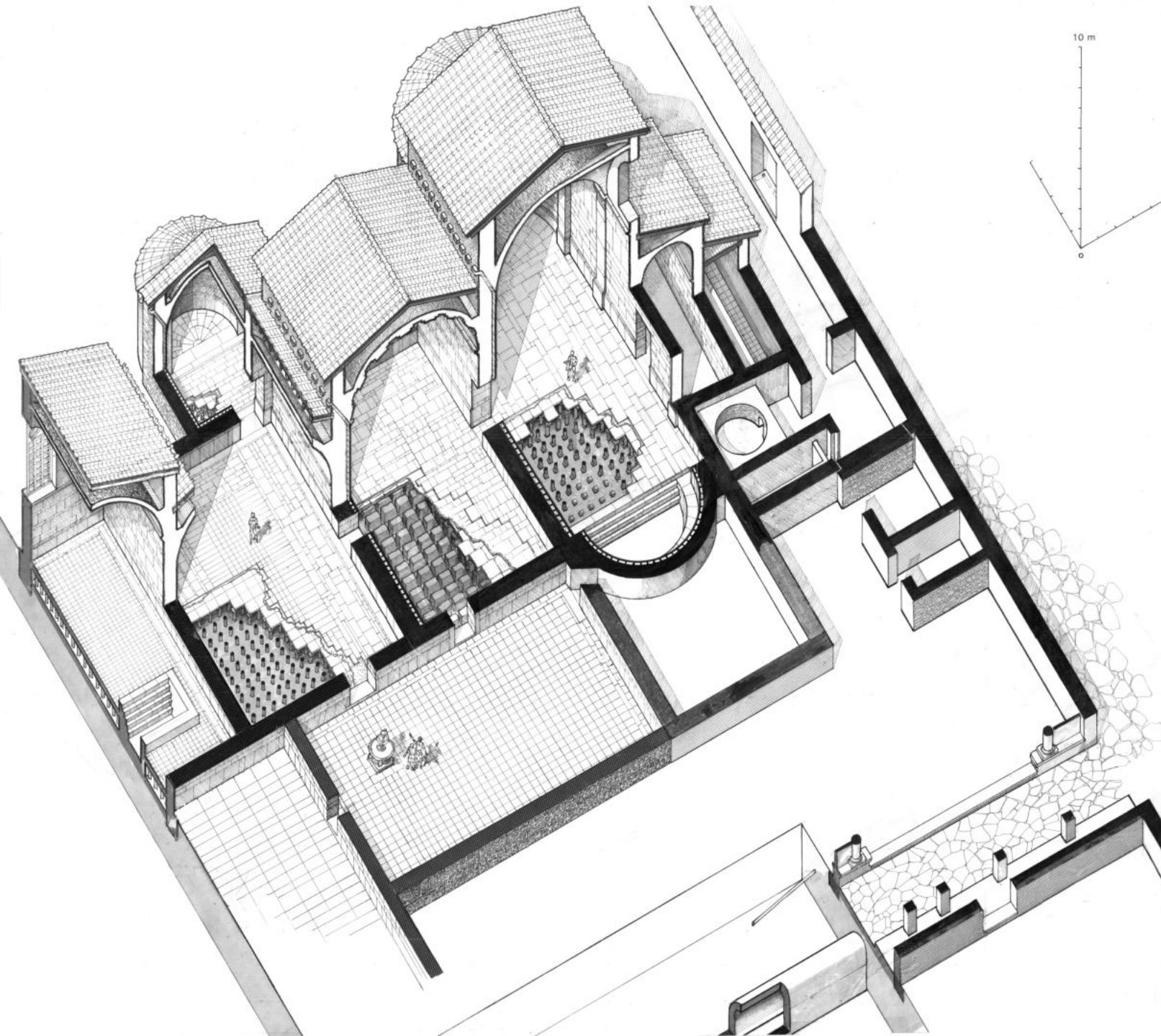
4. 2011-2020

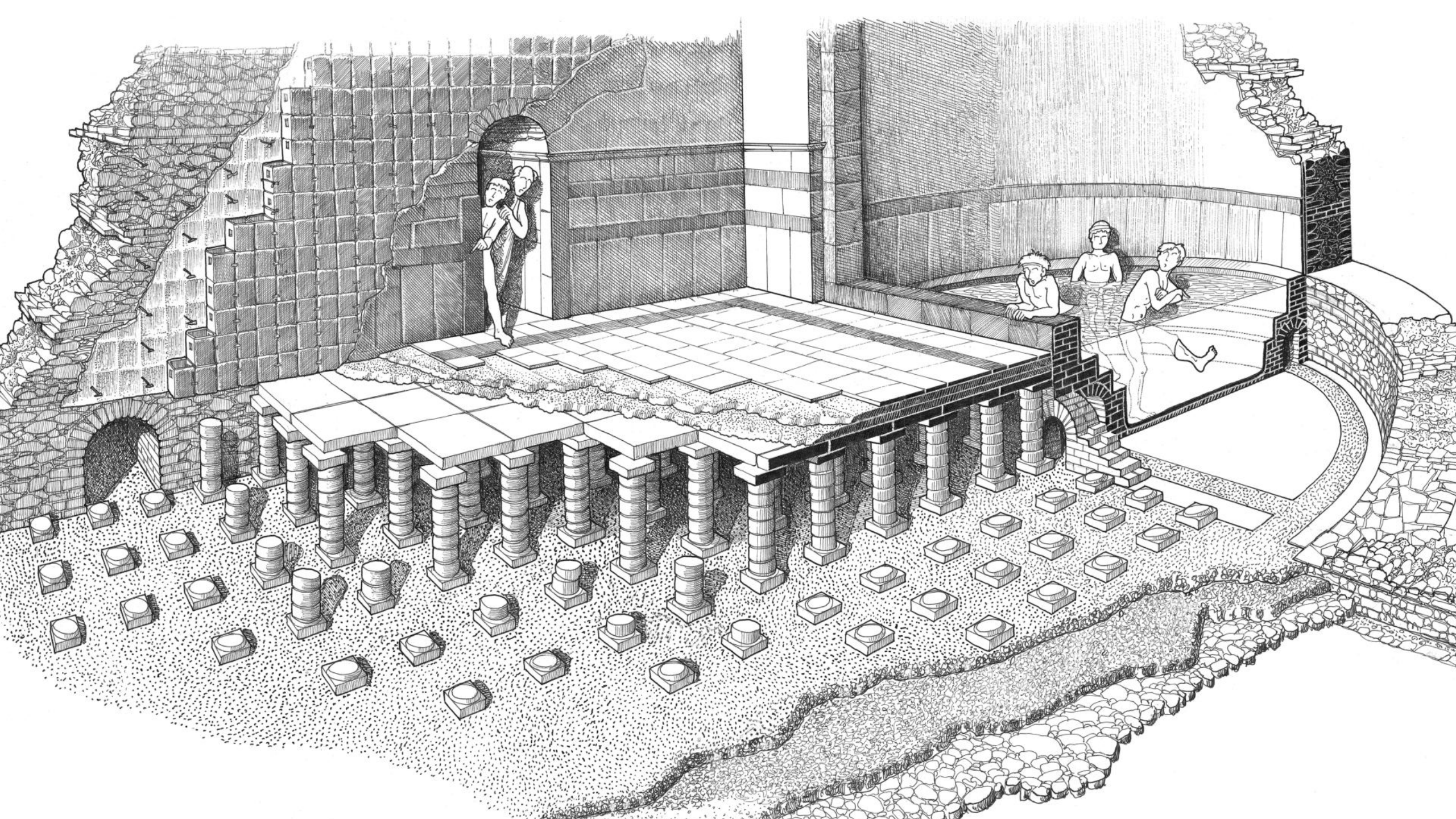
La comunicazione

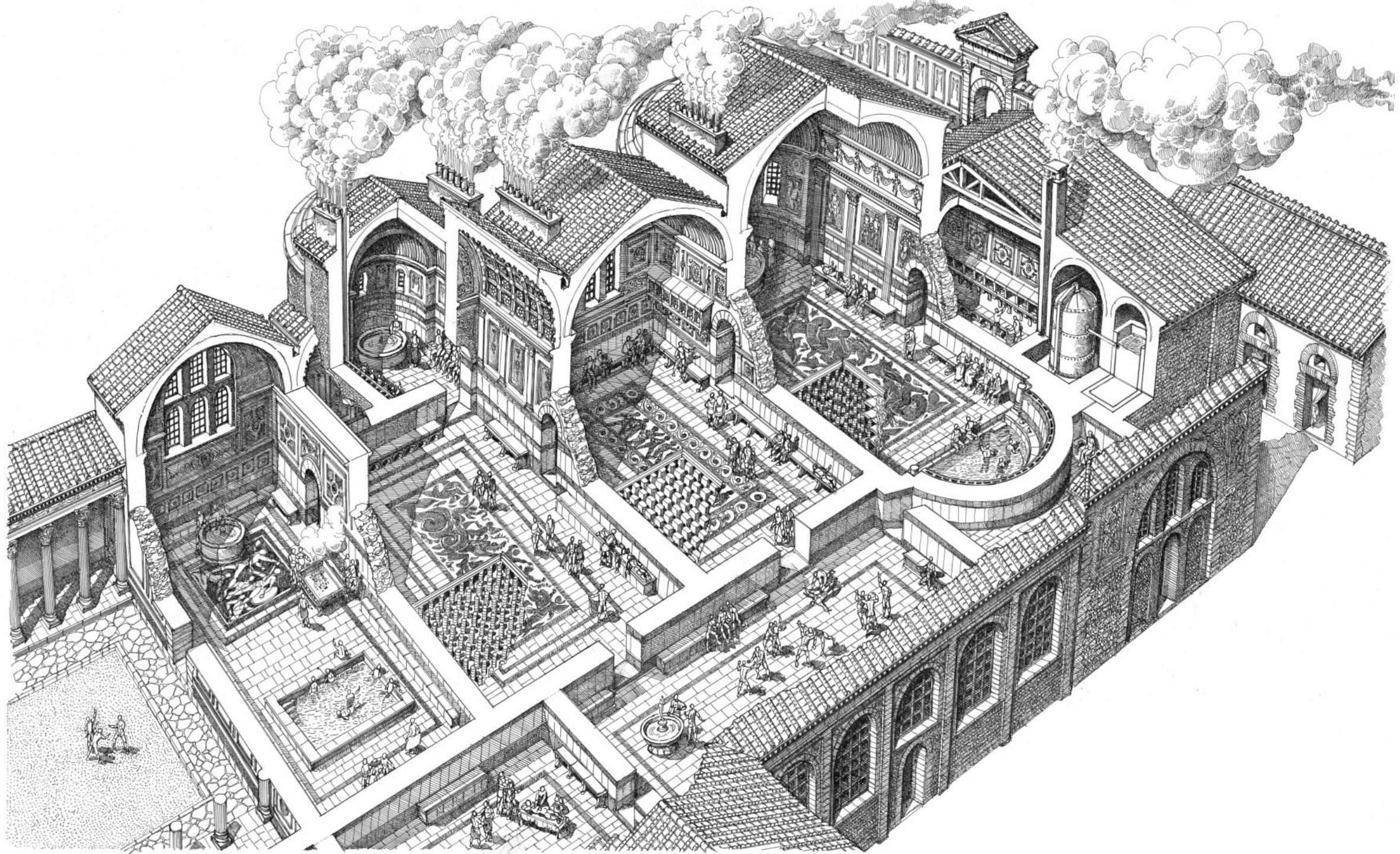


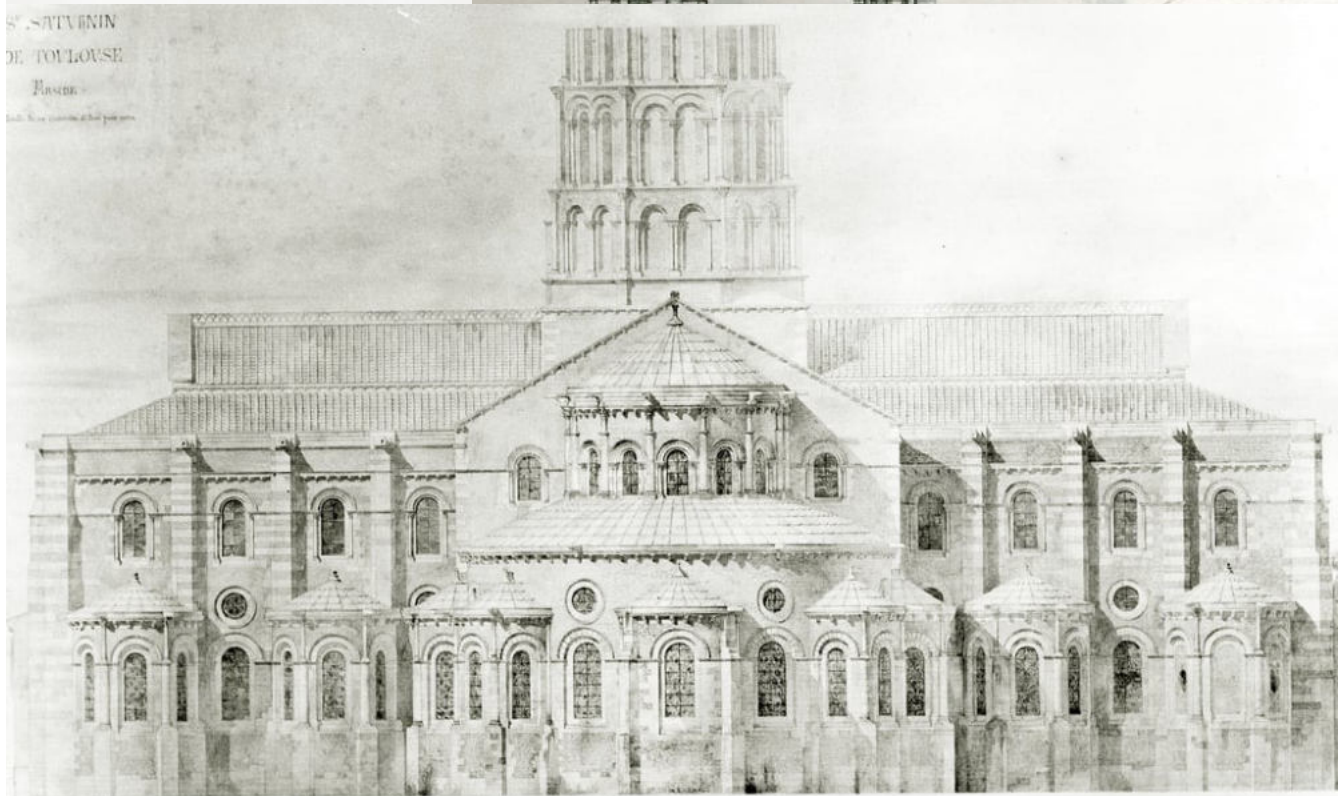
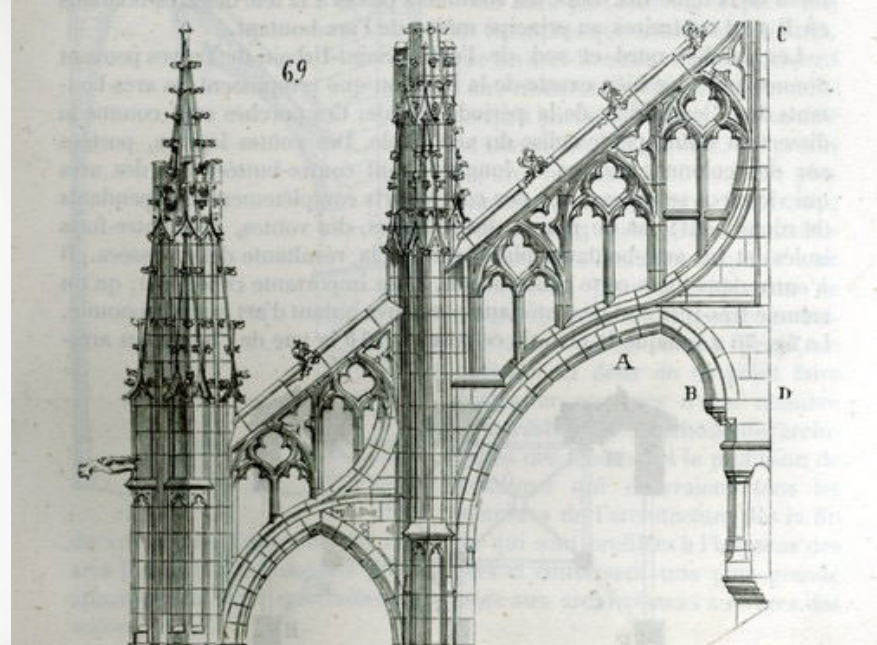


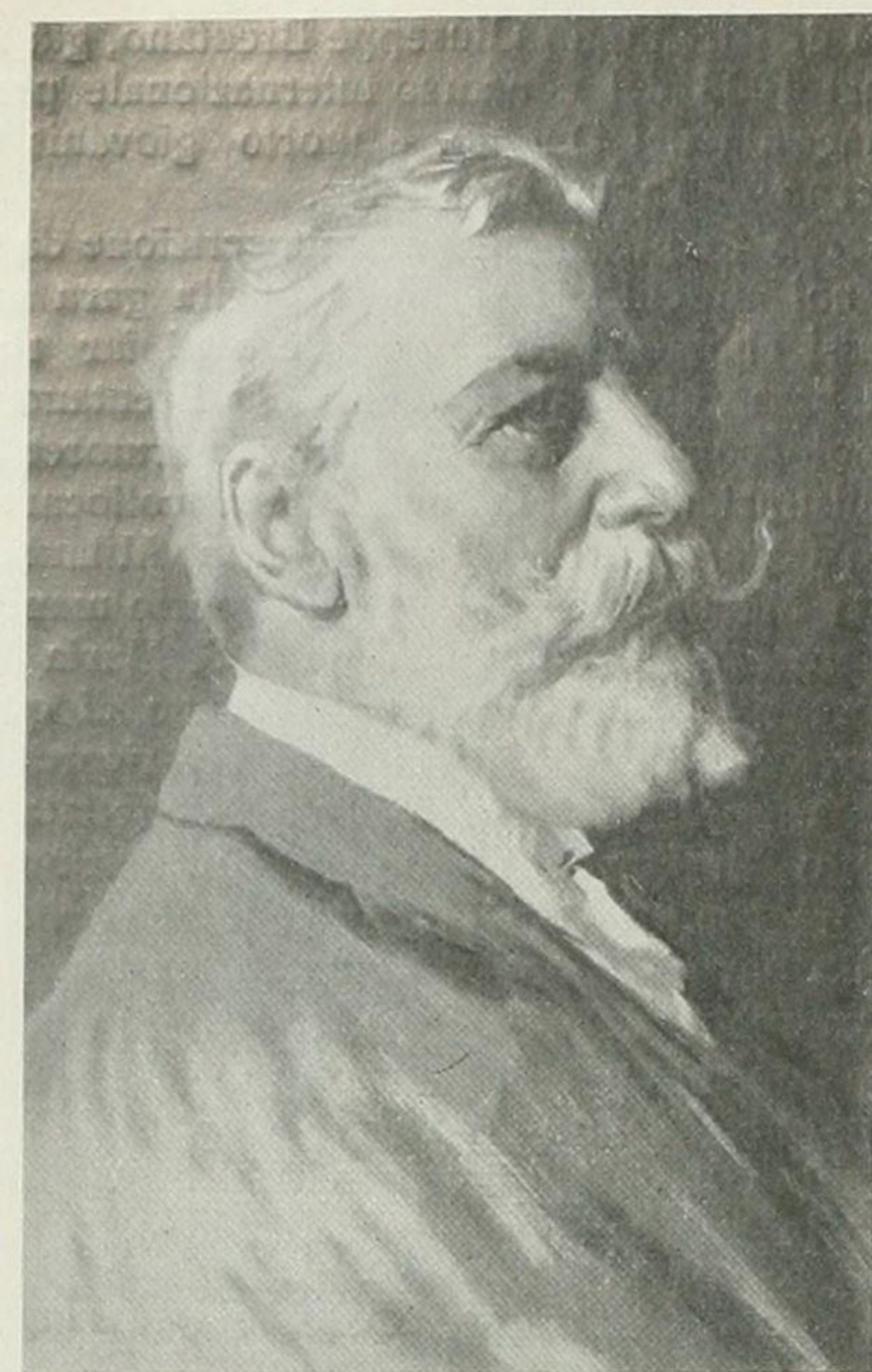




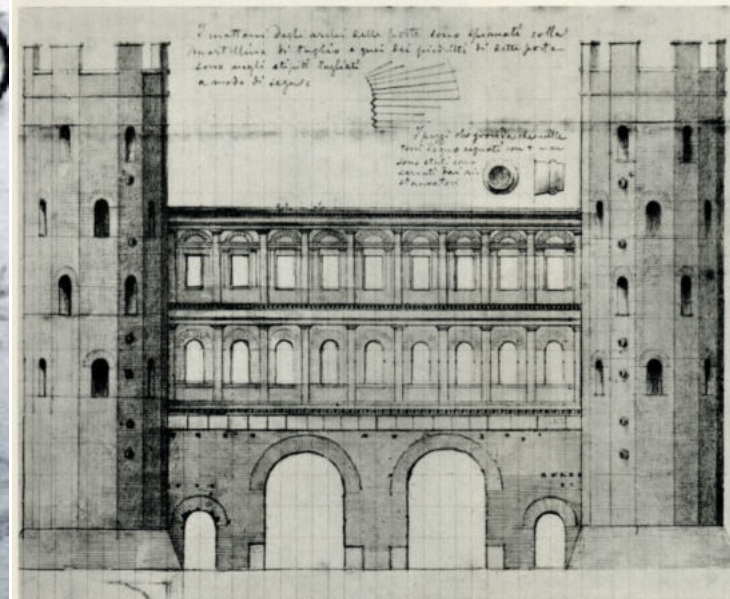
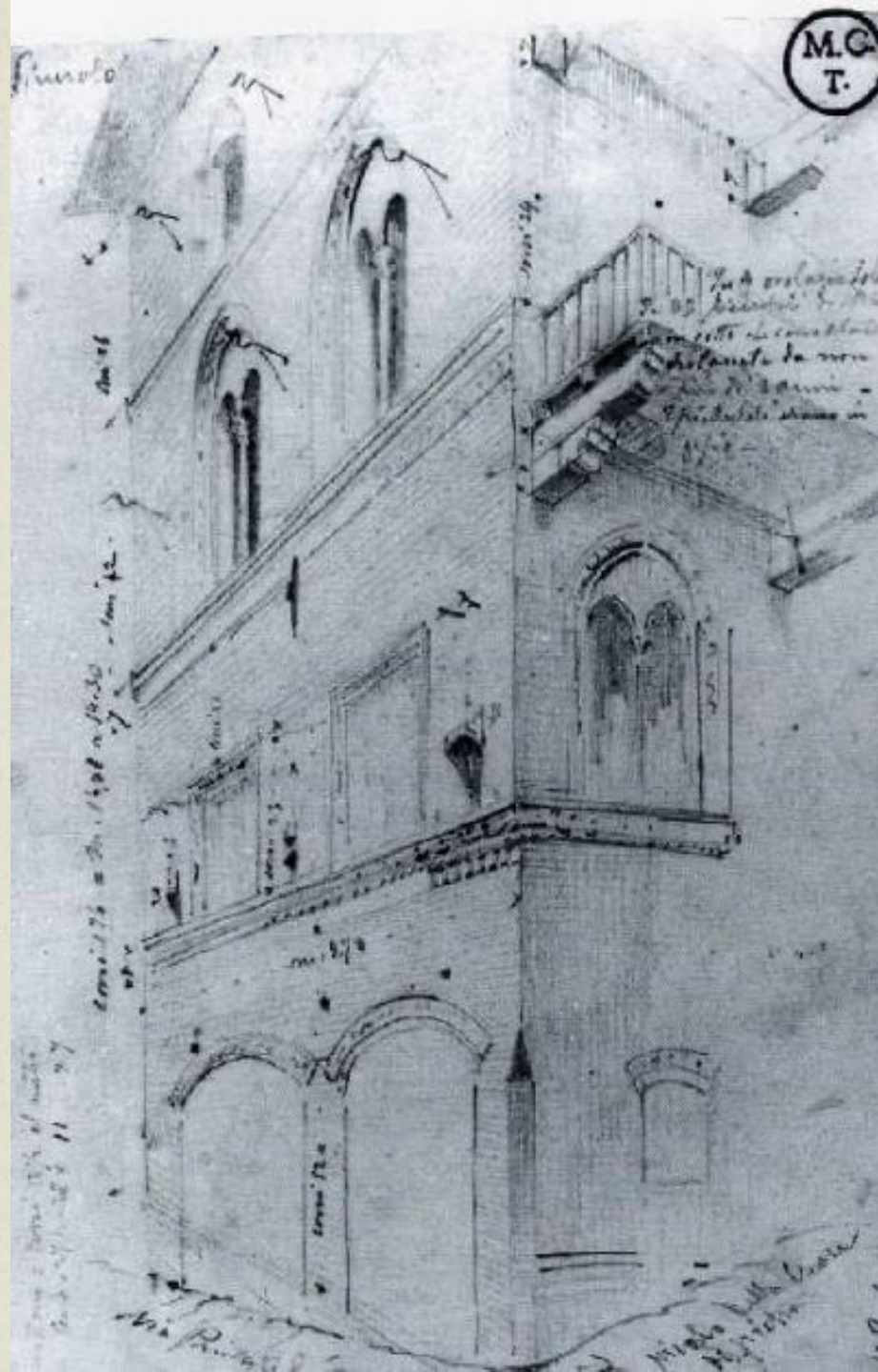




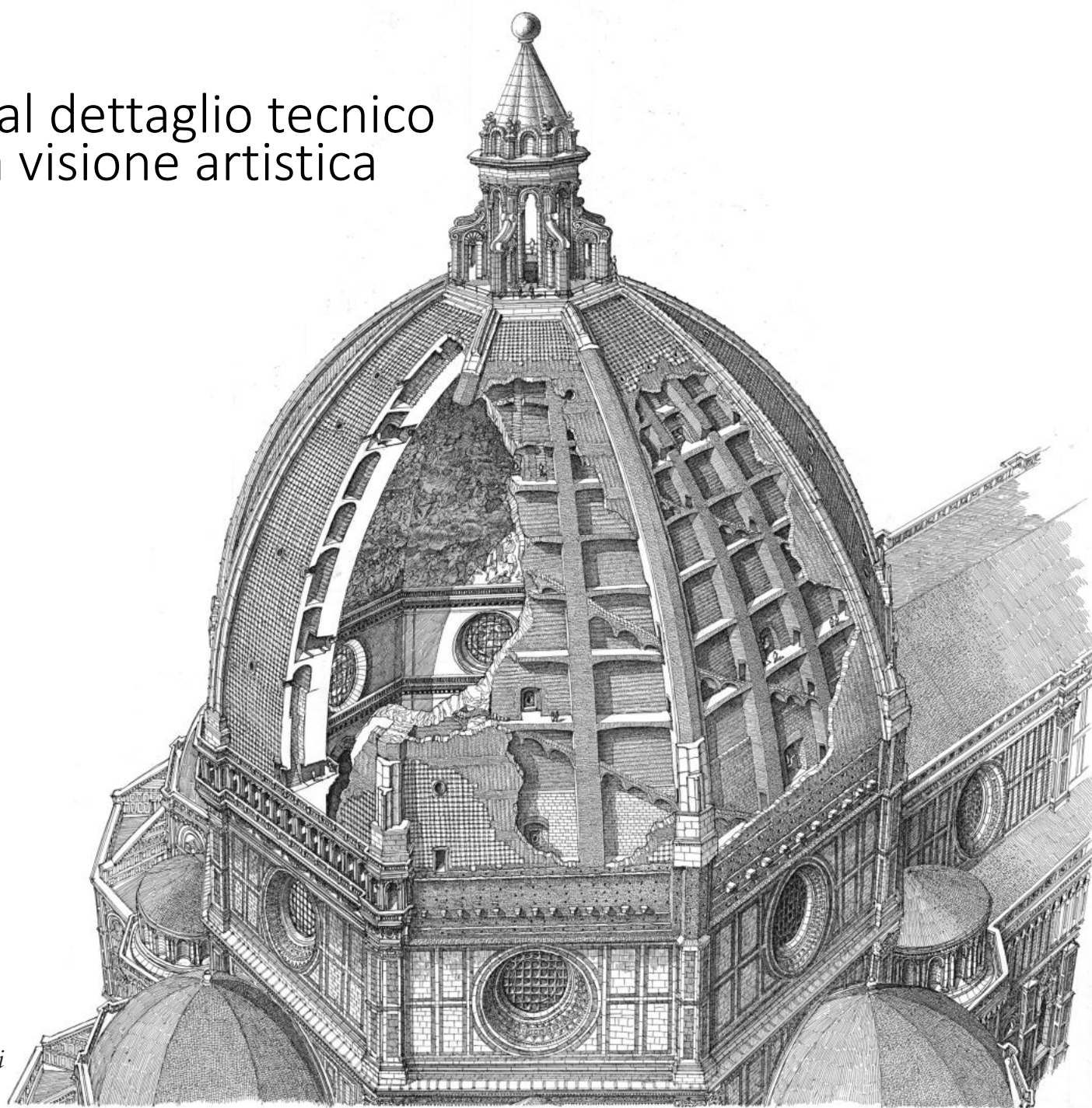




ALFREDO D'ANDRADE.



Attenzione al dettaglio tecnico
insieme alla visione artistica



Firenze, cupola del Brunelleschi



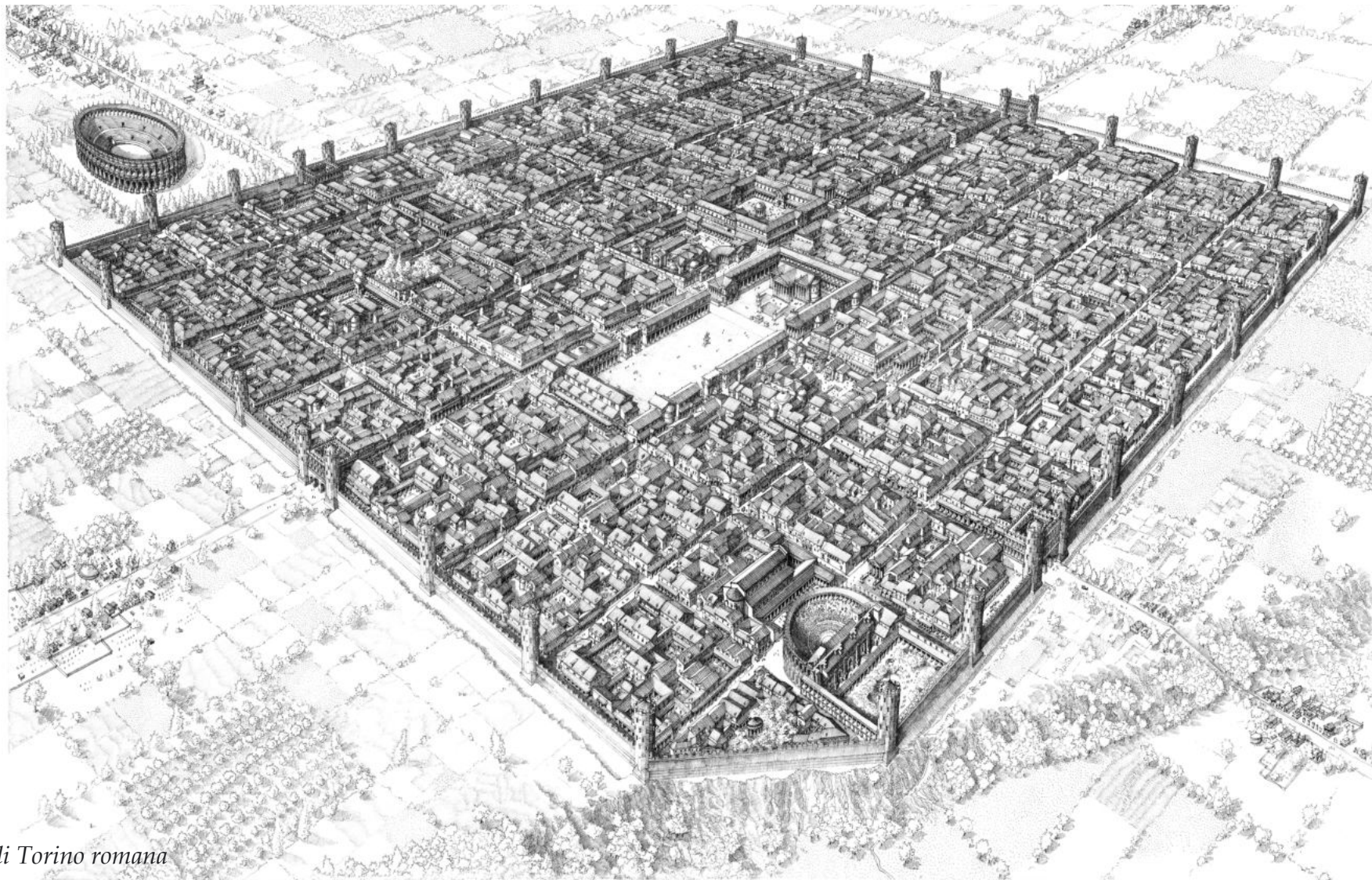
Pompei, via dell'Abbondanza.



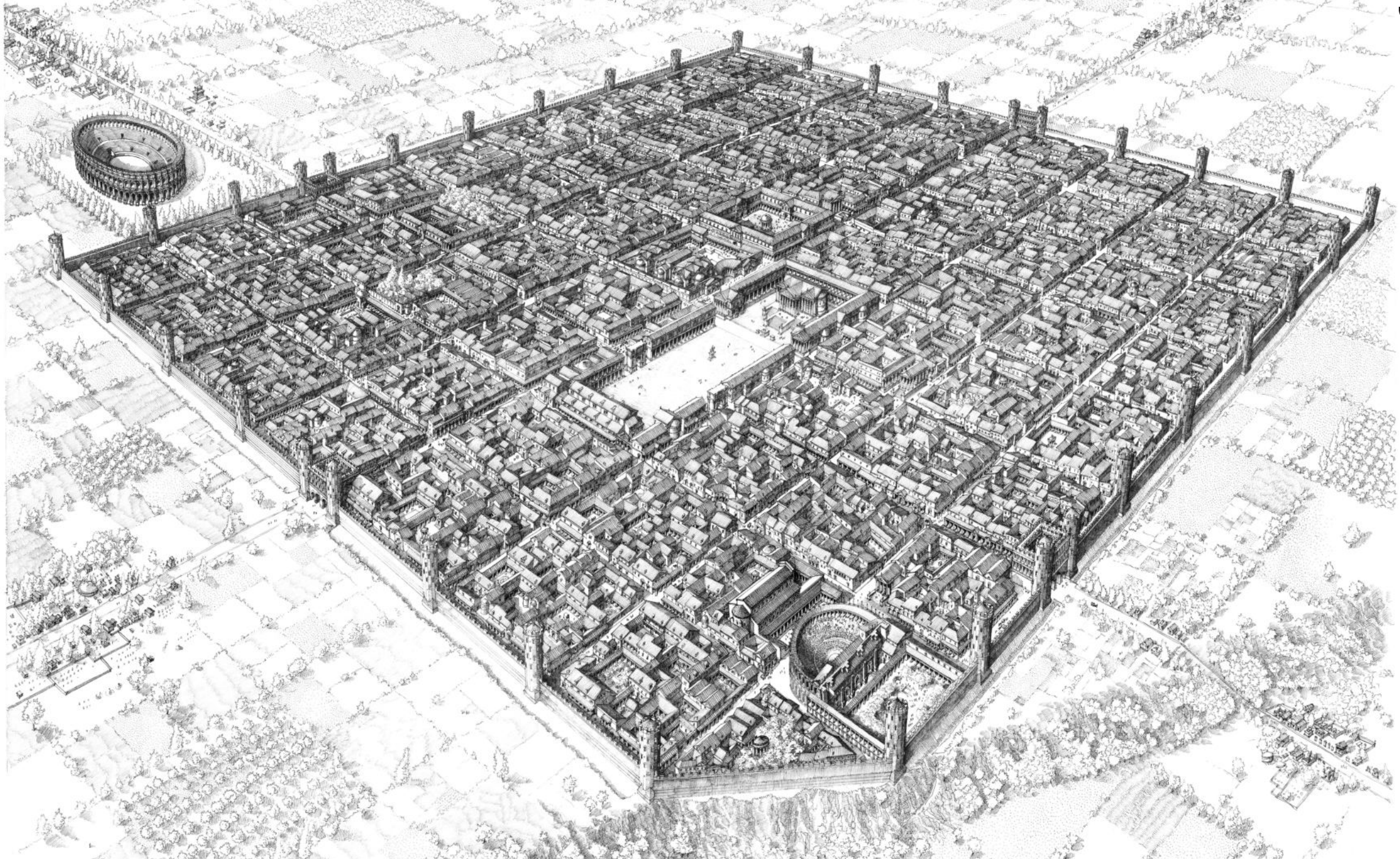
TECNICHE DI DISEGNO

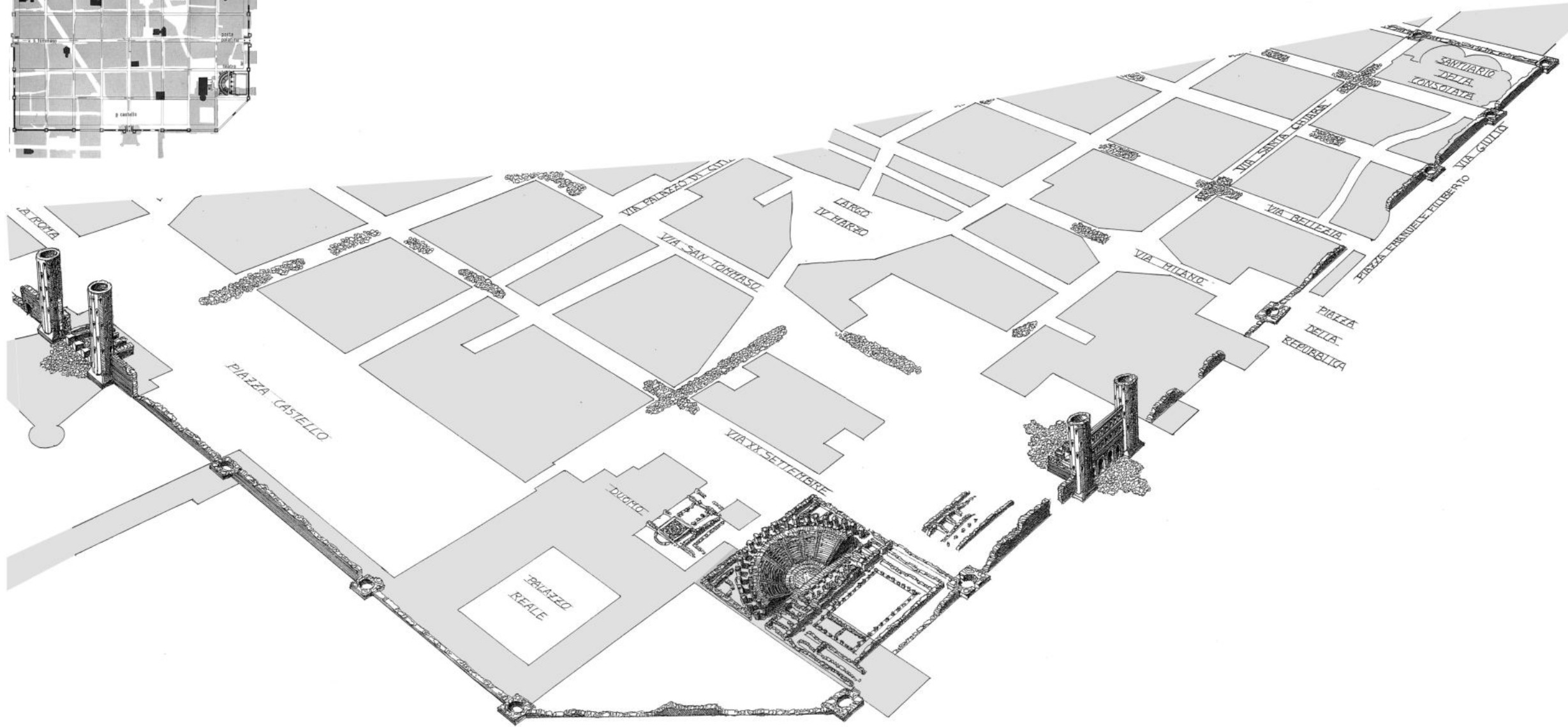
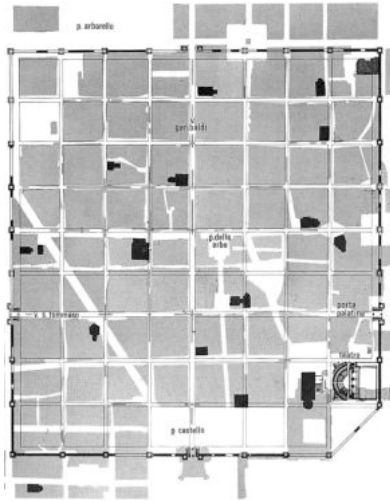
Veduta dall'alto

Per far capire la visione d'insieme in un colpo d'occhio



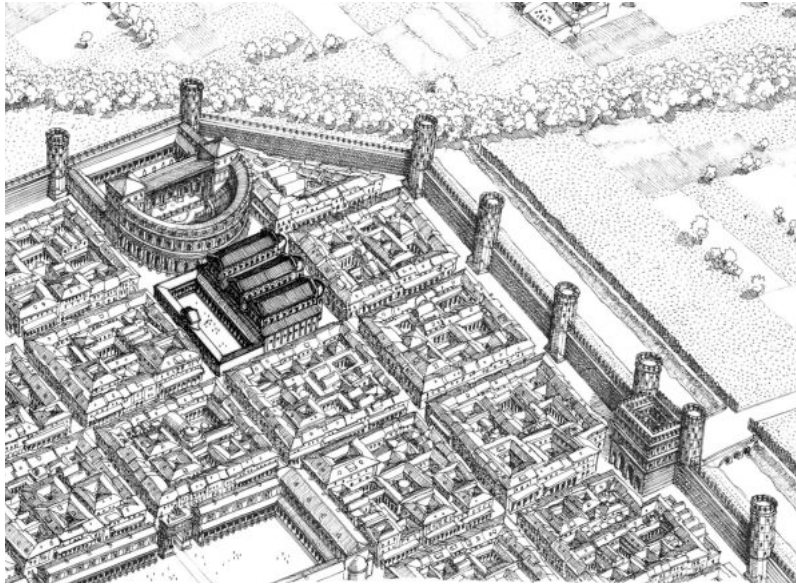
Ricostruzione di Torino romana



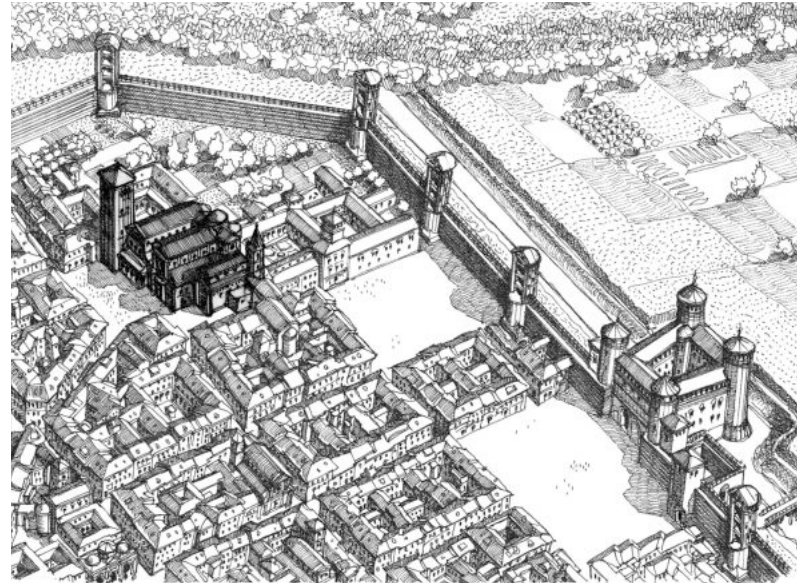


Evoluzione per fasi

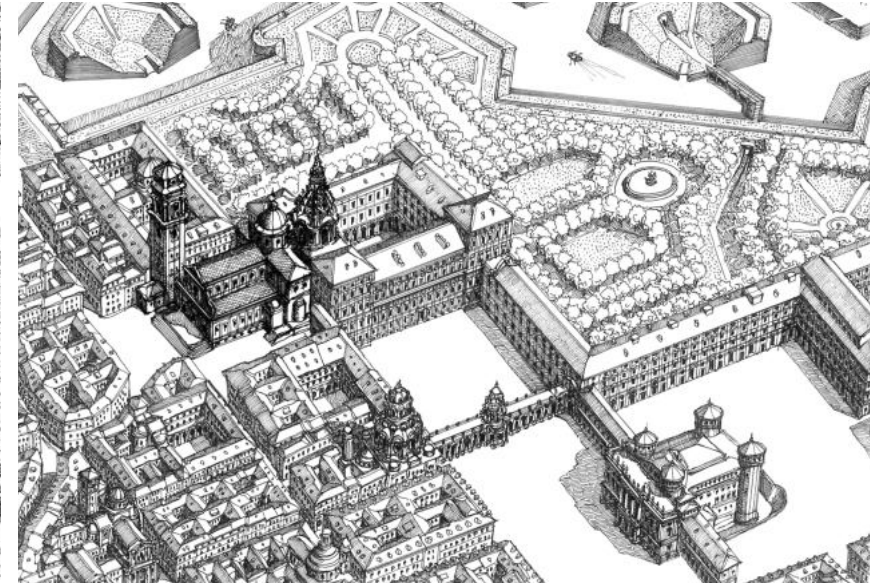
Usa lo stesso punto di vista nelle diverse epoche per rendere chiara la storia dell'edificio



Epoca romana

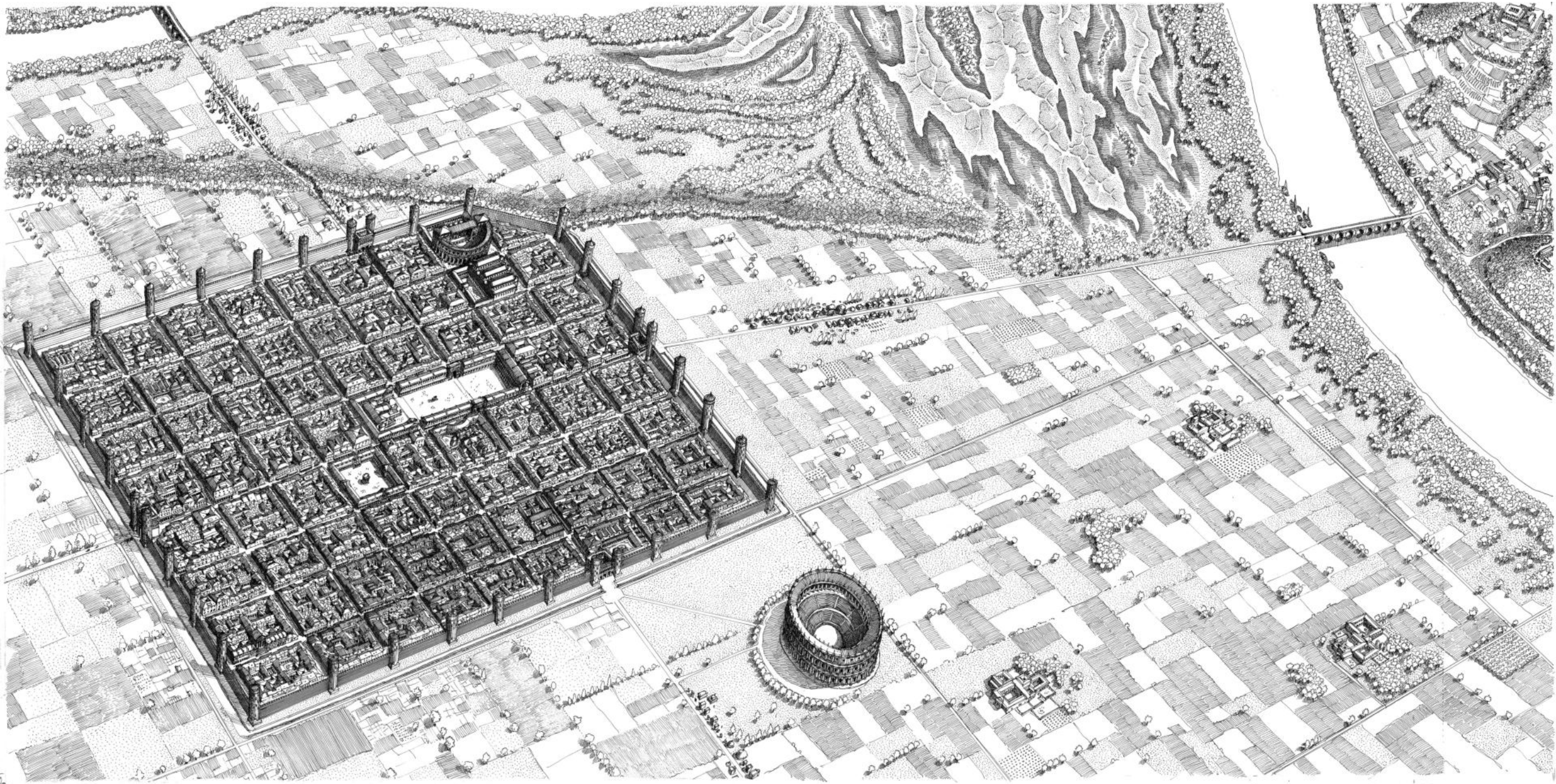


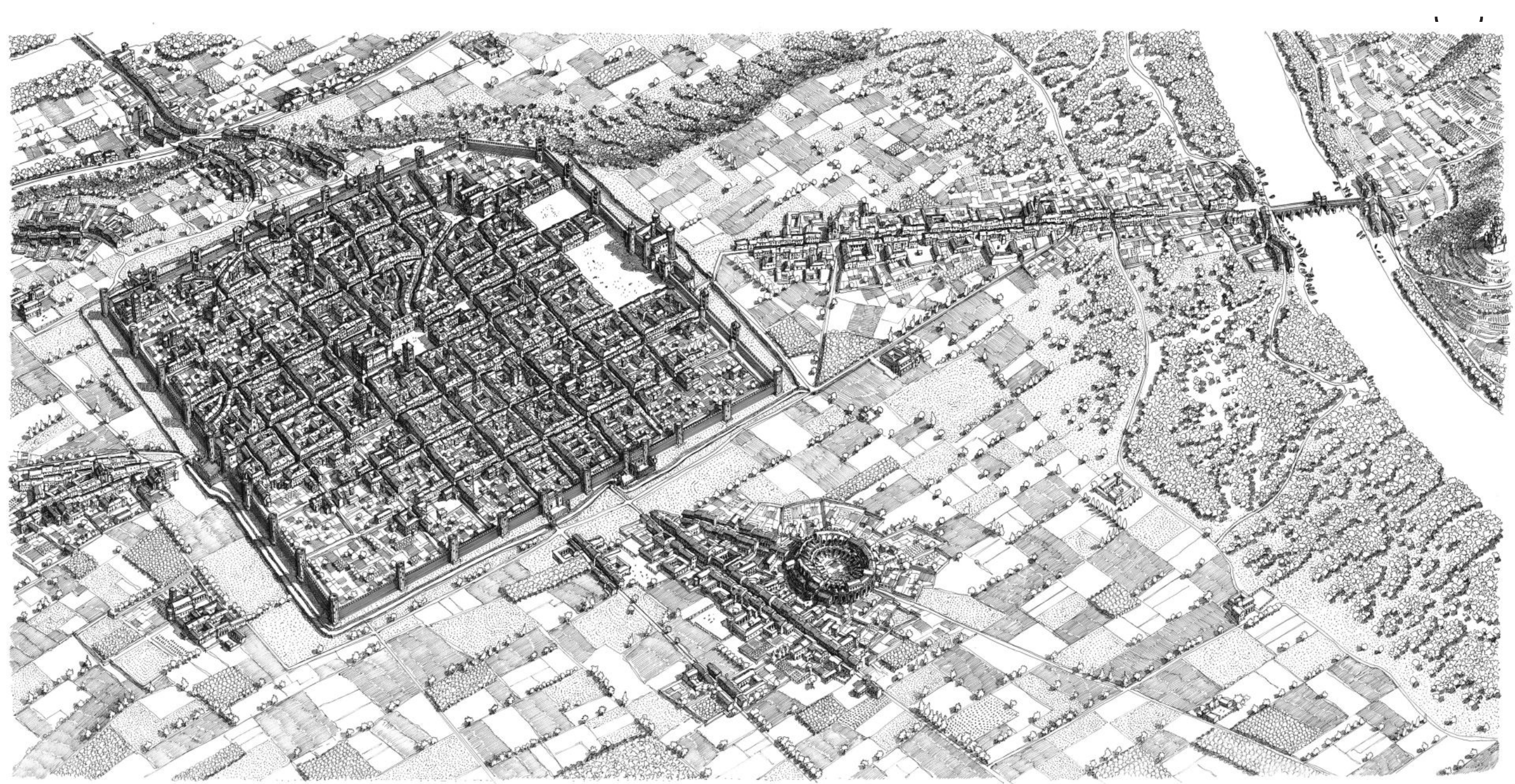
Epoca medievale



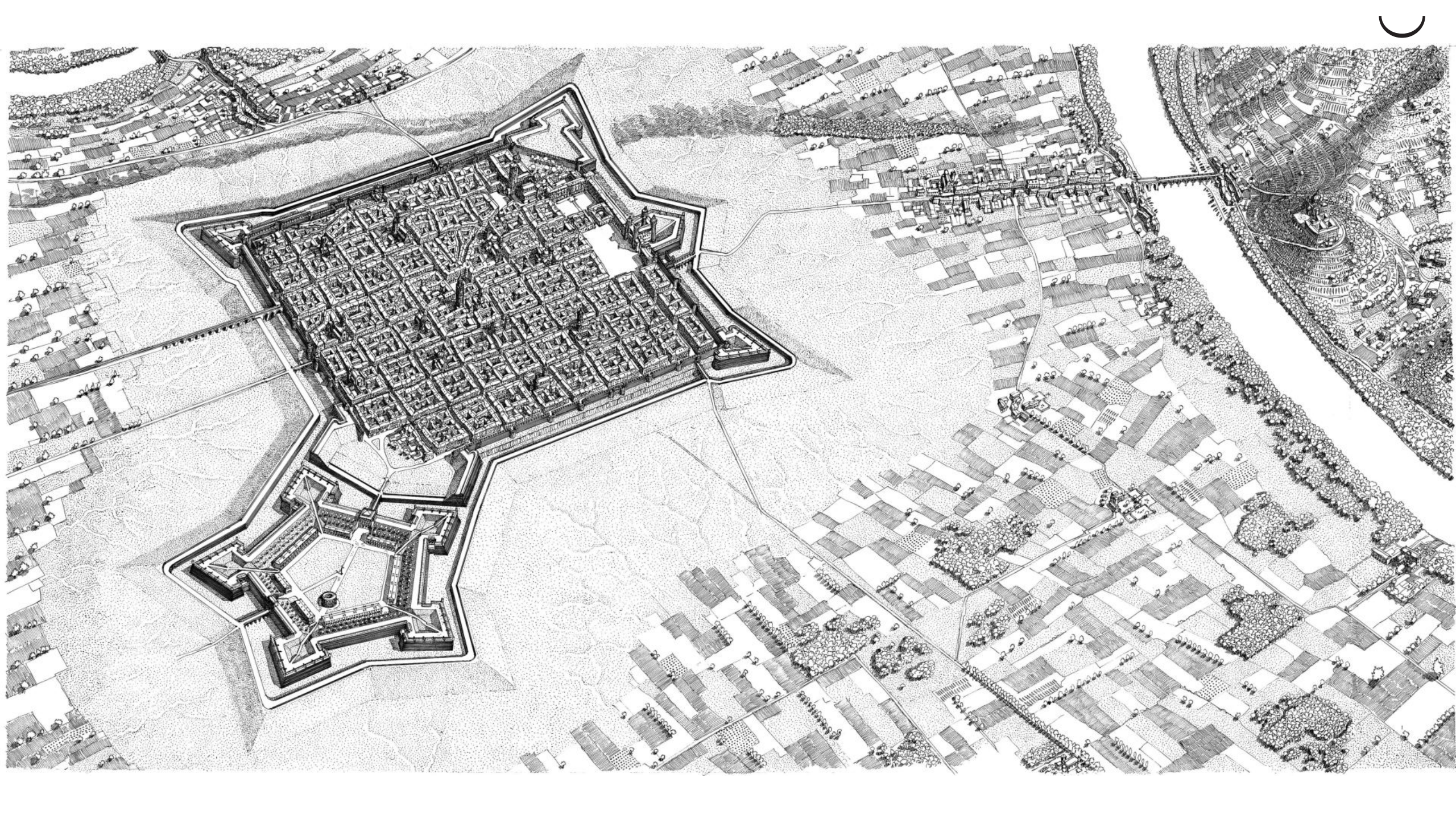
Il Duomo oggi

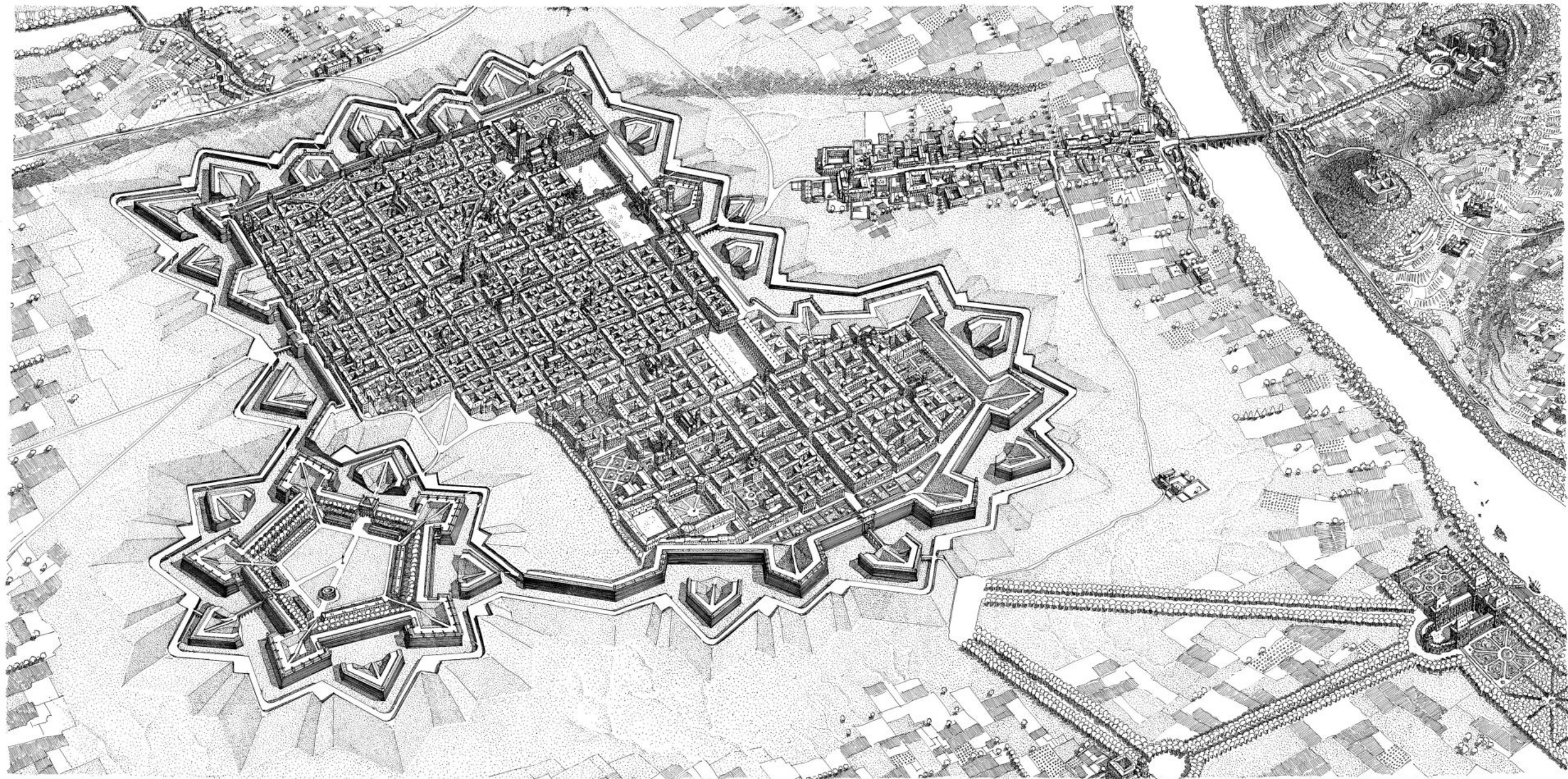
Evoluzione del Duomo di Torino

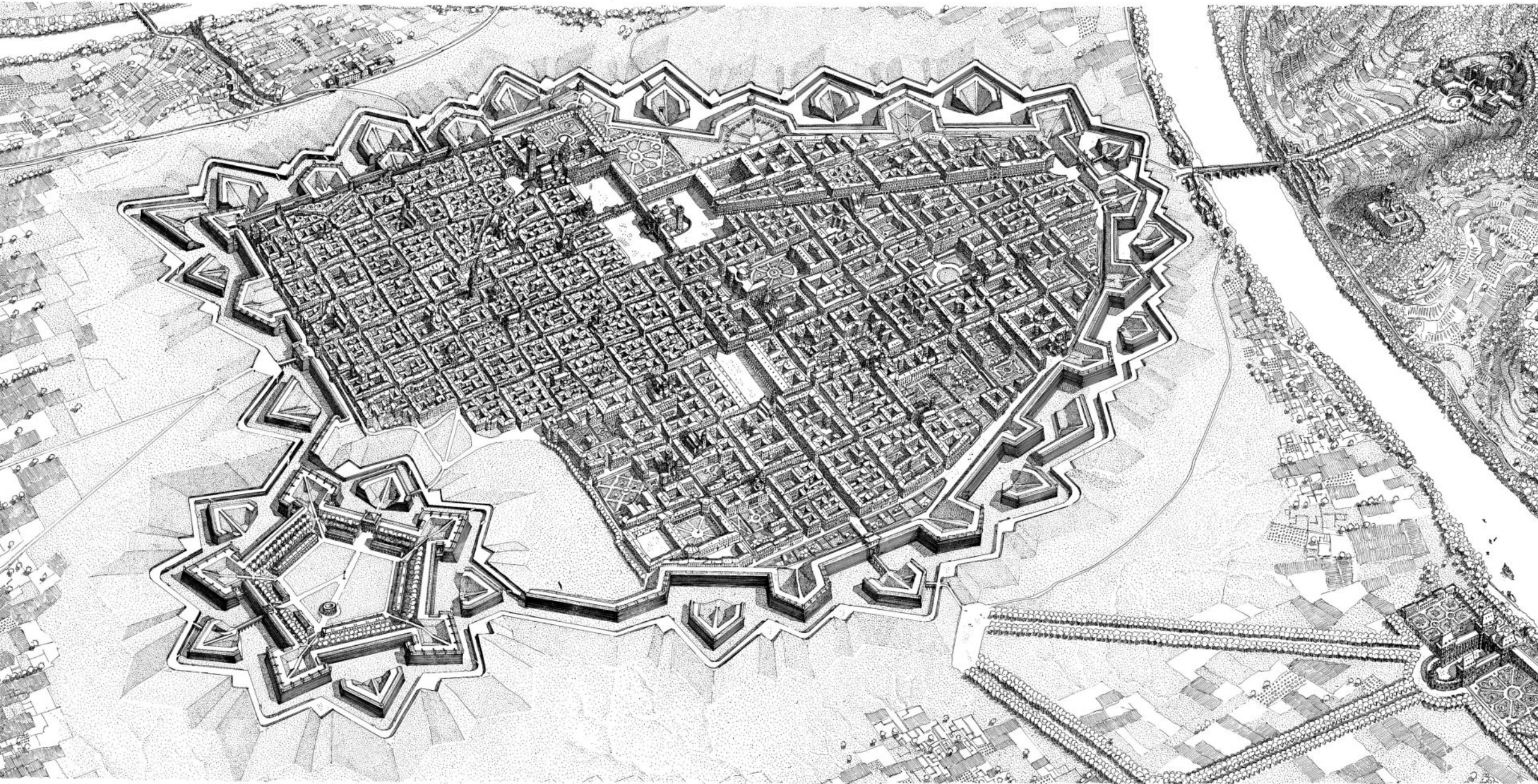


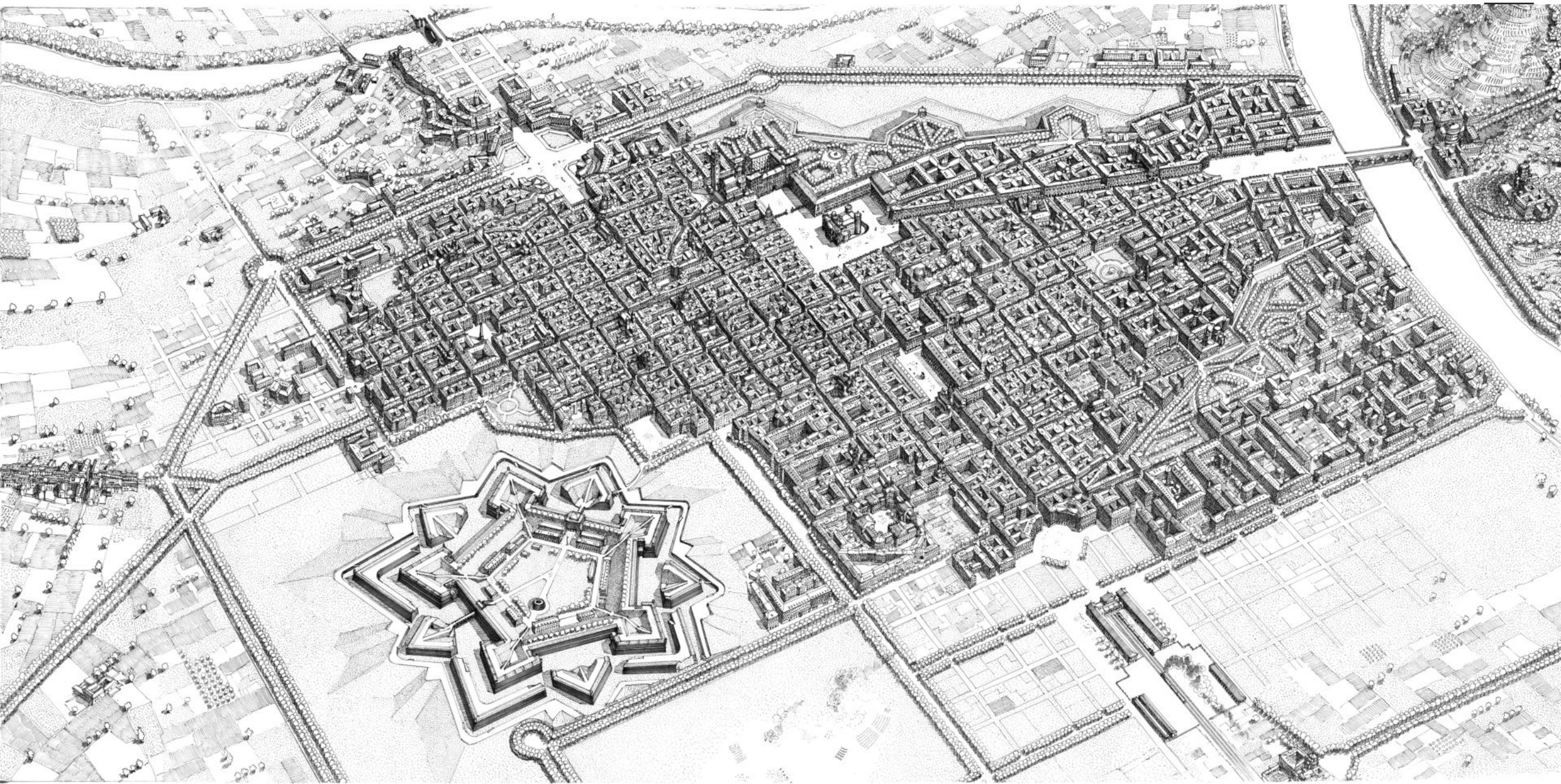


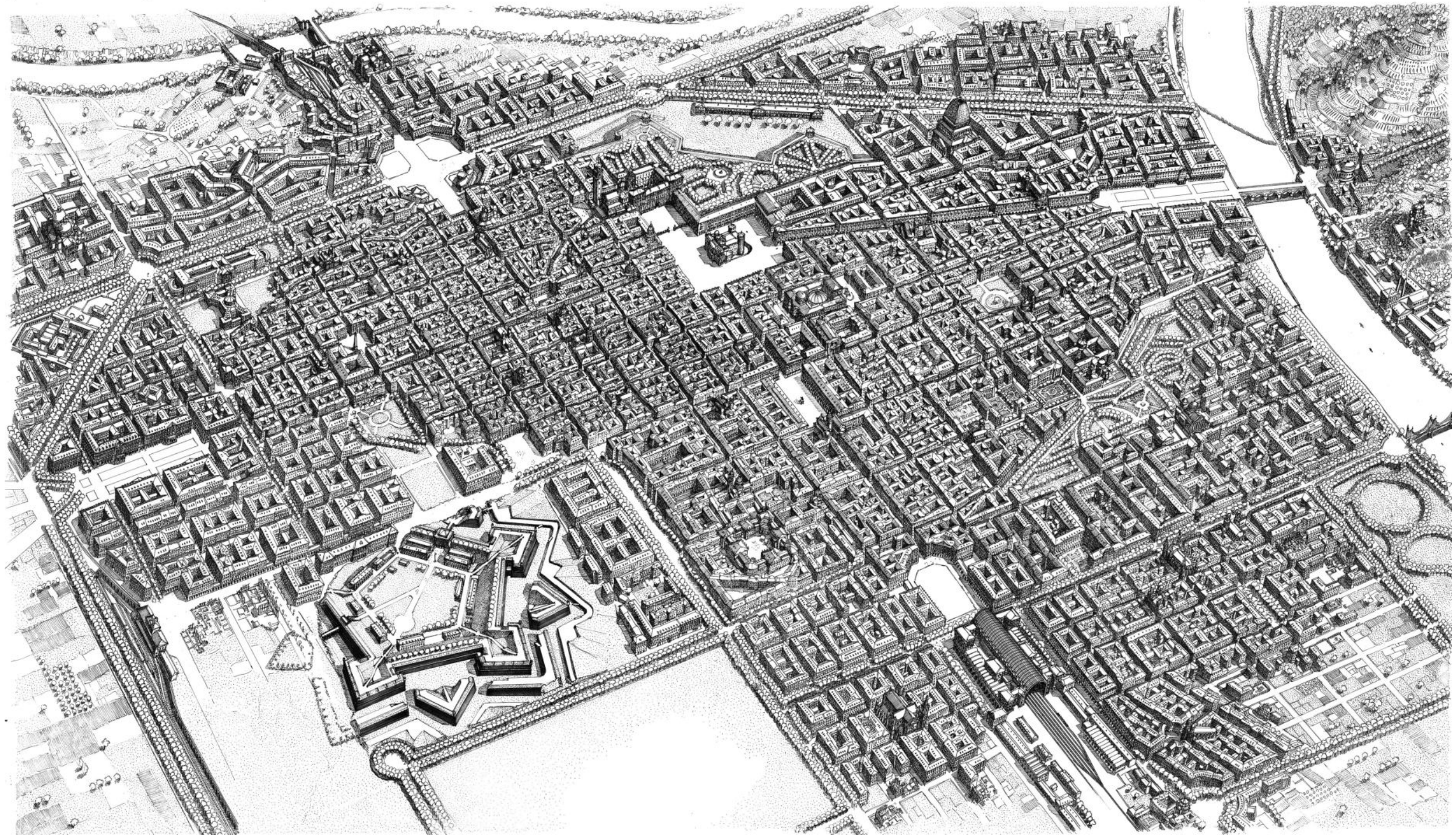






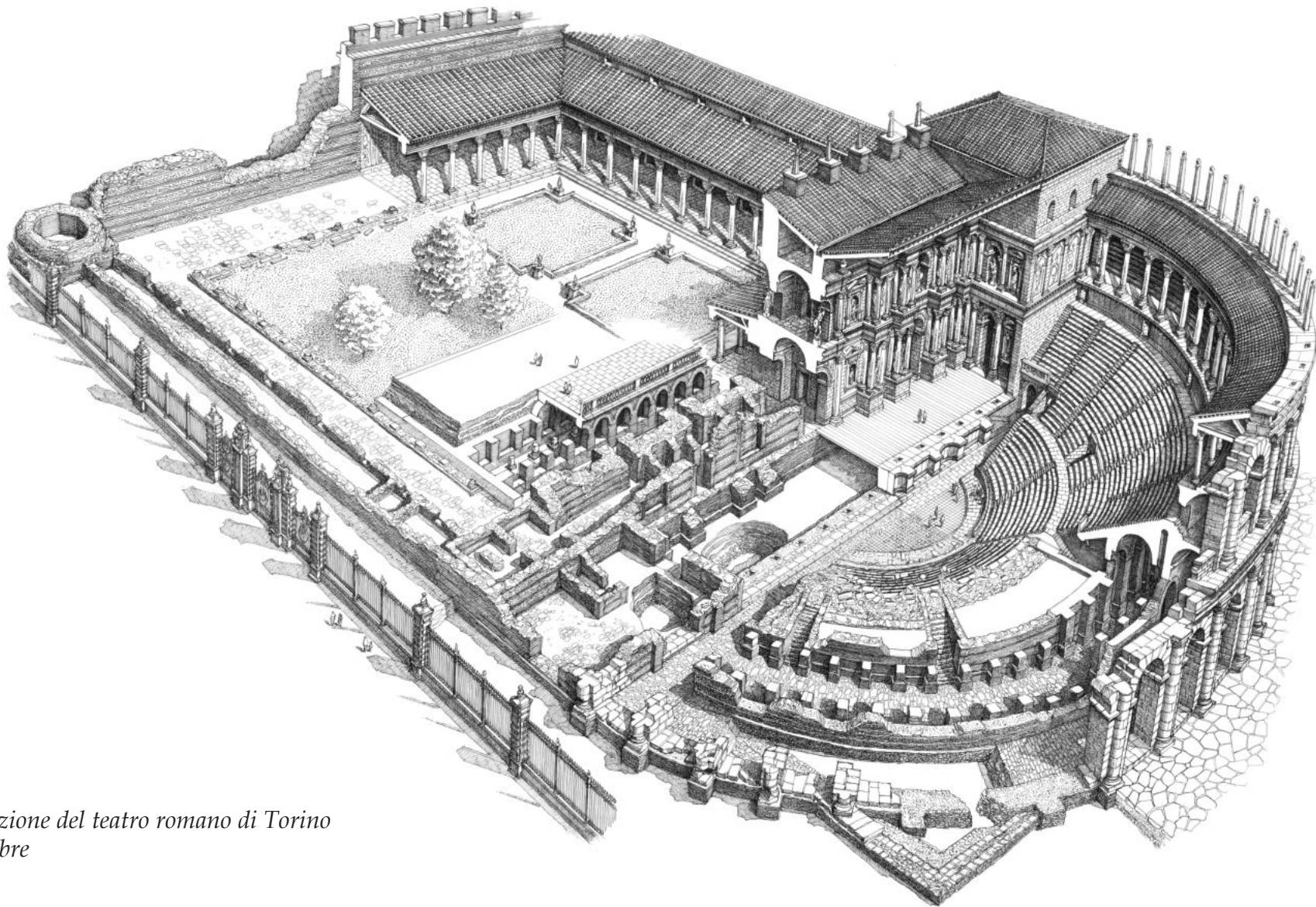






Resti e ricostruzione

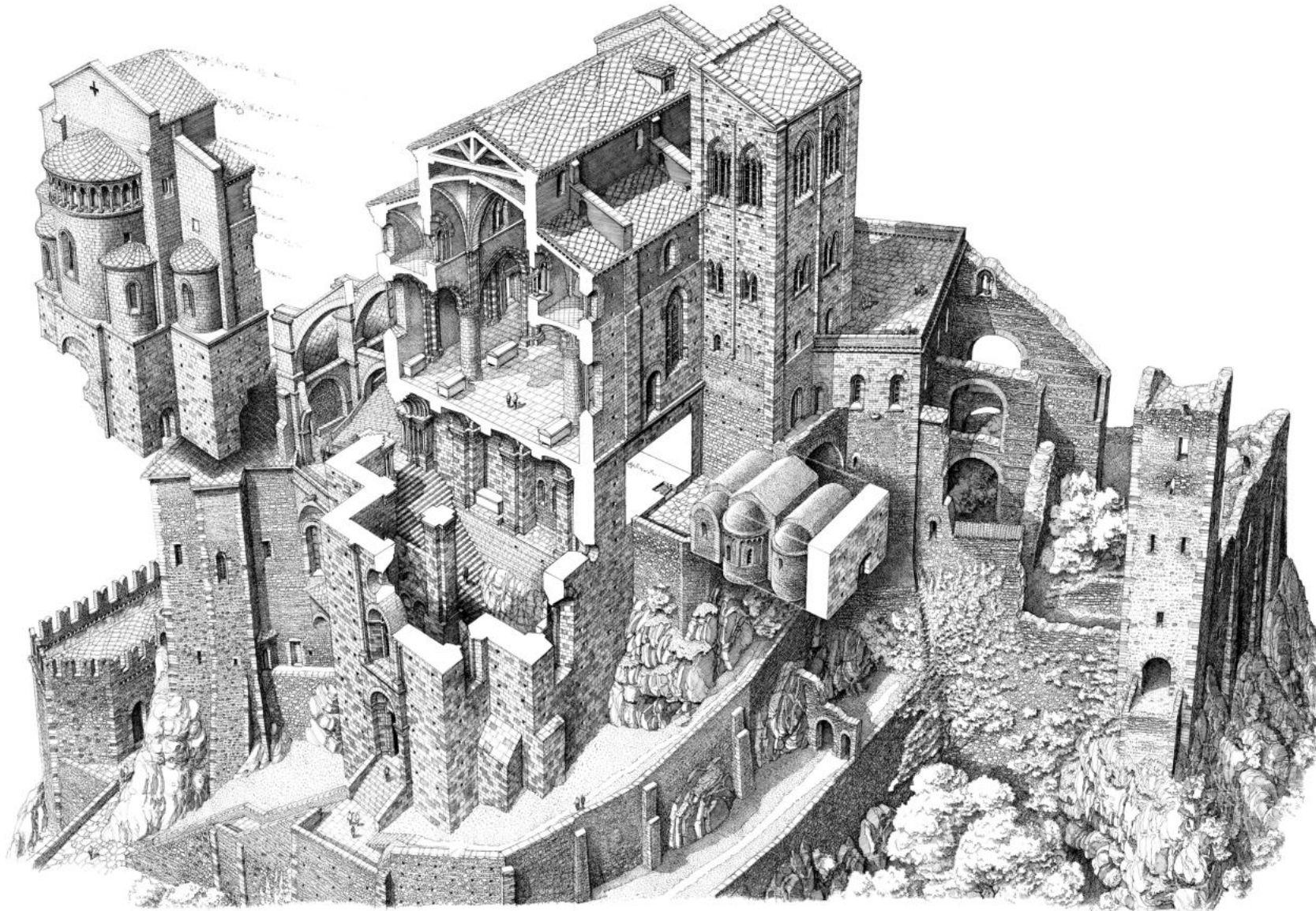
Separazione del bene in due, i resti antichi da una parte e la ricostruzione dall'altra.



*Resti e ricostruzione del teatro romano di Torino
Via XX Settembre*

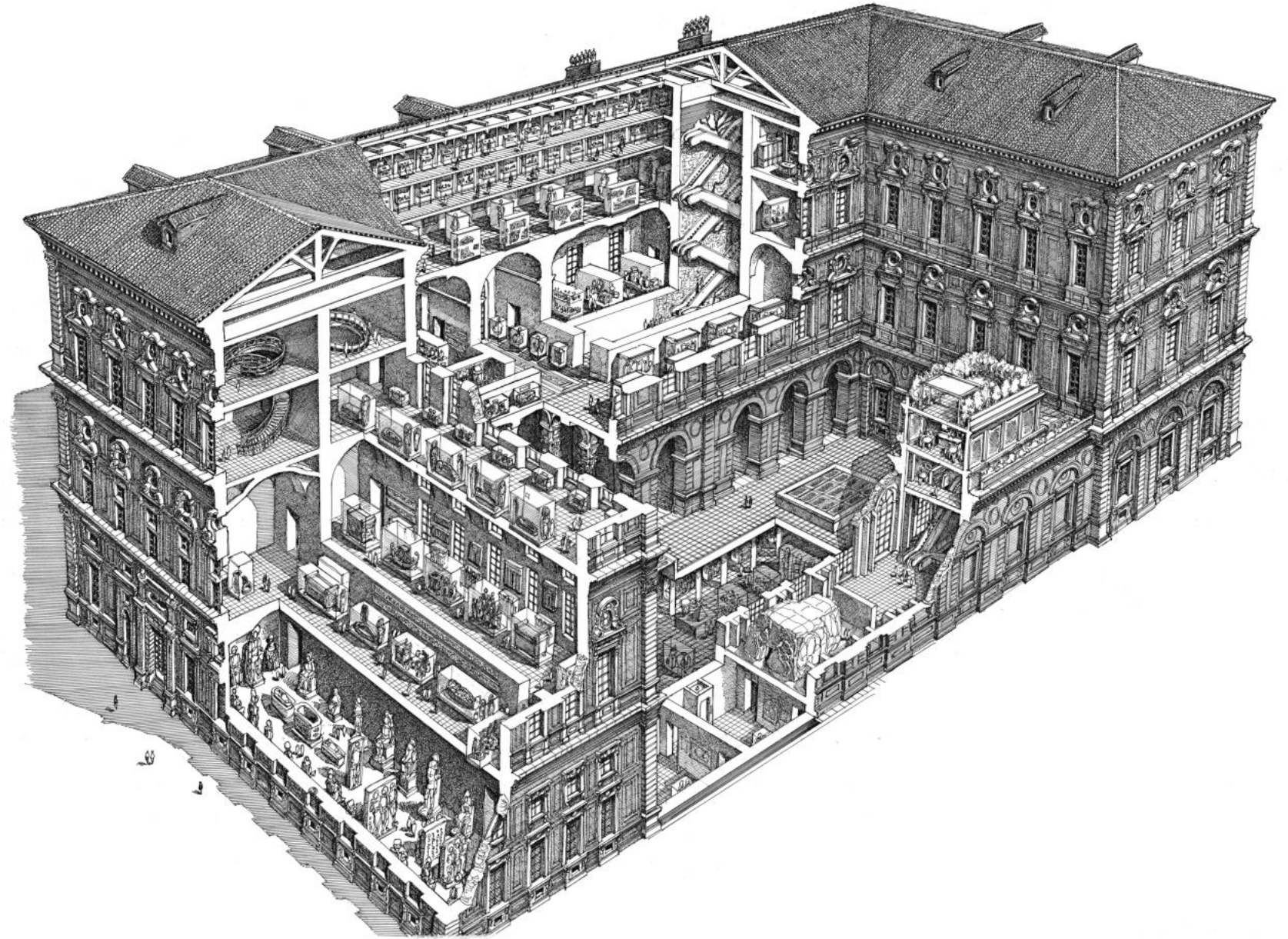
Scoprire l'interno

Arricchire la vista esterna con spaccati e sezioni dell'interno



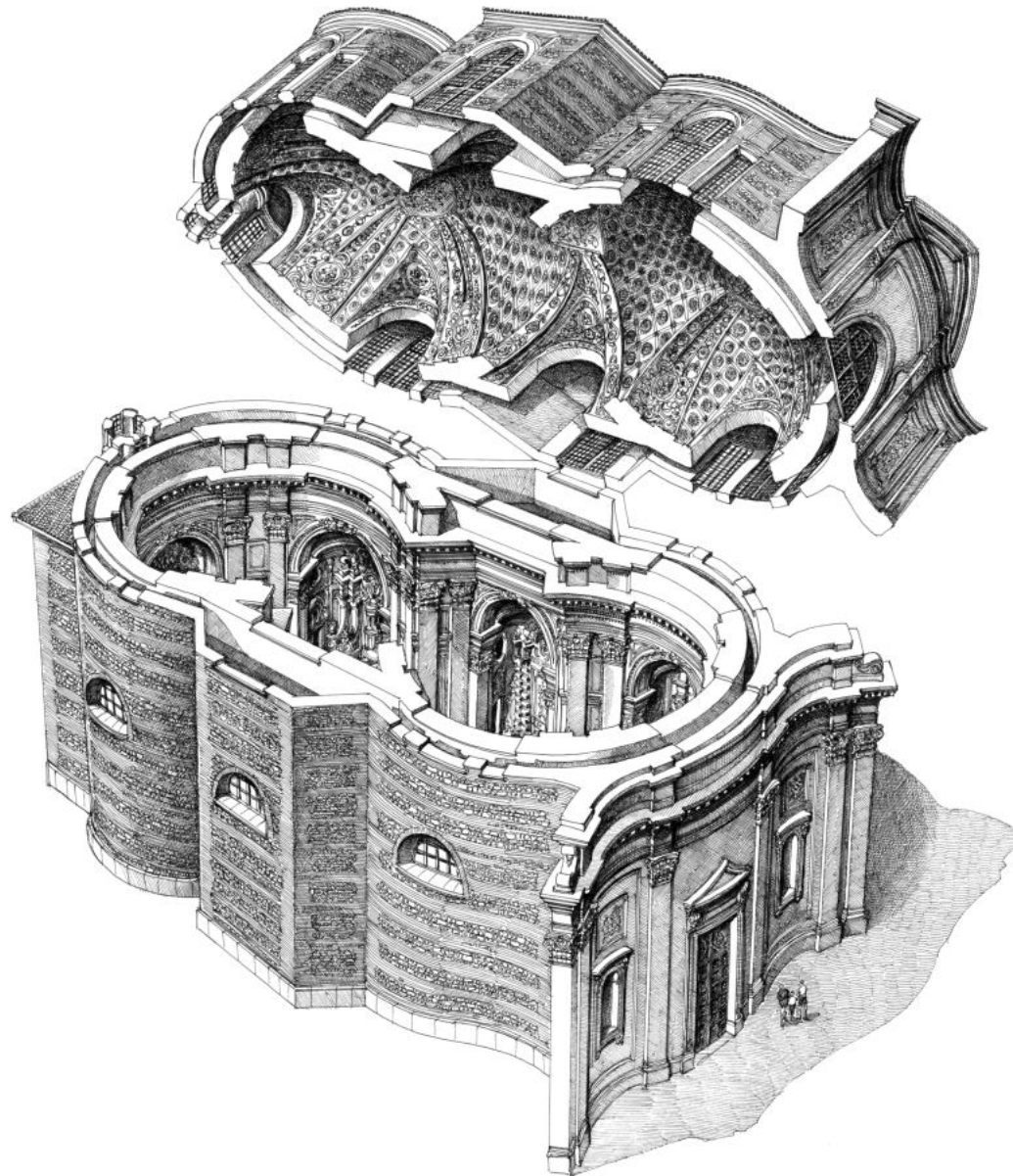
Sacra di San Michele

Scoprire l'interno: lo spaccato



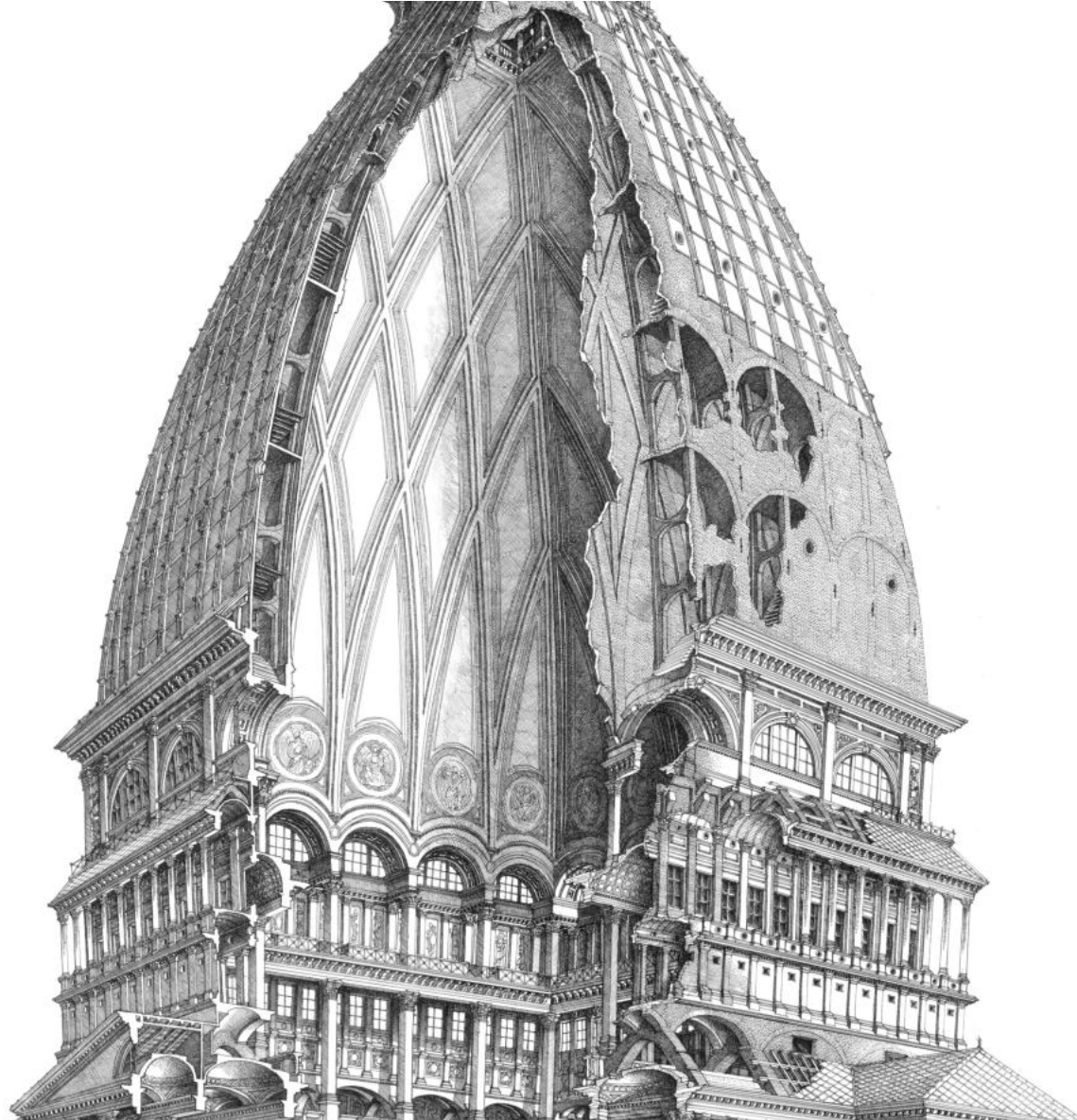
*Museo Egizio di Torino
Ex Collegio dei Nobili*

Scoprire l'interno: il ribaltamento



*Museo Egizio di Torino
Ex Collegio dei Nobili*

Scoprire l'interno: il colpo d'ascia



Mole Antonelliana

